

India's road infrastructure serves as the foundation of its economic development, enabling trade, connectivity, and access to essential services across both urban and rural regions. Accurate, comprehensive, and timely data on road projects—especially those developed through Public-Private Partnerships (PPP)—is vital for a wide range of stakeholders including researchers, policymakers, credit rating agencies, financial institutions, and infrastructure developers.

Akara has developed Roads India, a dedicated service to meet the growing demand for reliable insights into India's road infrastructure projects.

### 1. Content

Roads India combines disparate data-sets on the Roads sector sourced from MoRTH, NHAI, IHML, Stock Exchanges, MCA, etc. The Annexure provides indicator wise details captured in the service:

- **Coverage** – Over 2700 National Highway projects implemented through EPC and PPP models.
- **Stretch Shape files** – The NH stretches Geo-visualized on the map
- **Project Life cycle** – Timeline tracking & monitoring of project milestones – announcement to completion to commissioning
- **Developer & SPV** – The Developer details along with the Concessionaire, SPV & the financials of the SPV
- **Toll Plaza** – The monthly vehicle counts and toll revenue for nearly 1100 NH toll plazas, along with vehicle-type-wise data for deeper insights into traffic composition and revenue trends.
- **Investment Trust** – The Asset monetization of the roads by listed Investment Trusts

Together, these datasets provide a powerful foundation for informed decision-making for the stakeholders in the road and road transportation sector ---investors, policymakers, researchers, developers, lenders, highway operators, consultants etc.,

### 2. Key Features

- **Intuitive User Interface:** Clean, user-friendly design ensuring a seamless experience.
  - **Custom Filters & Queries:** Flexible tools to slice, dice, and analyze data.
  - **Advanced Filtering:** Enables deep dives into projects based on status, region, or entity
  - **Geo-Visualization:** Interactive map view to spatially visualize the stretches based on different parameters
  - **Geo-Visual Analytics:** Overlay multiple datasets for deeper insights.
  - **Standard Reports:** Standardized reports for quick view of the data
-

- **Export Options:** Download datasets in spreadsheet (.xls) format for offline use.
- **Trend Analysis:** Users can conduct trend analysis on the toll data

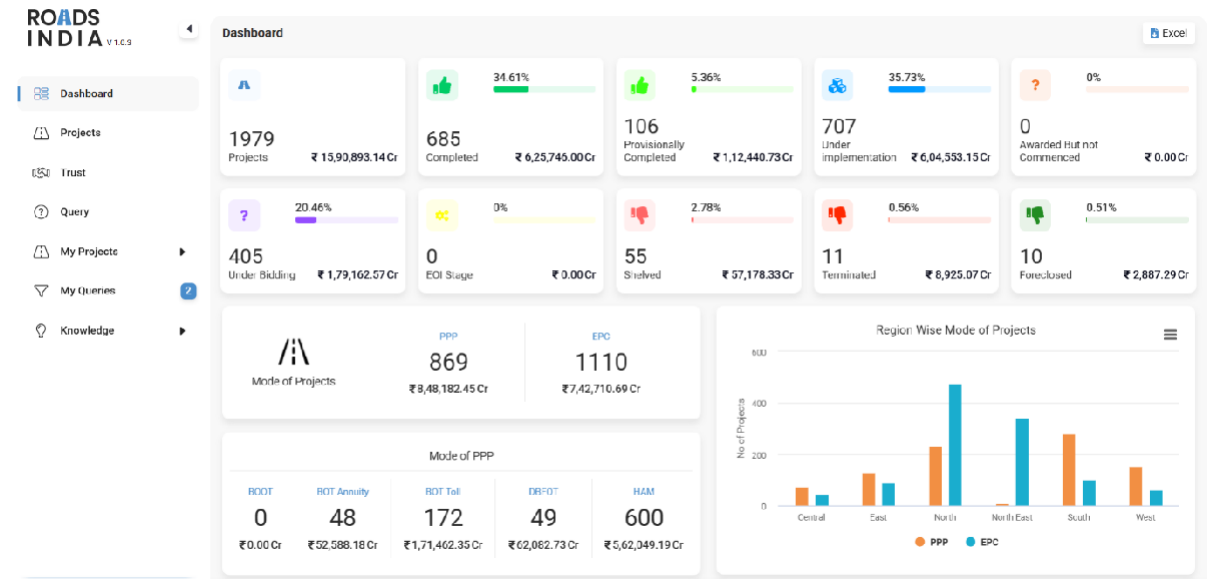
**3. User Support & Training**

- **Online Training:** Training to help users navigate the service and utilize its features effectively.
- **Customer Support:** Users can reach out via the online portal or email.

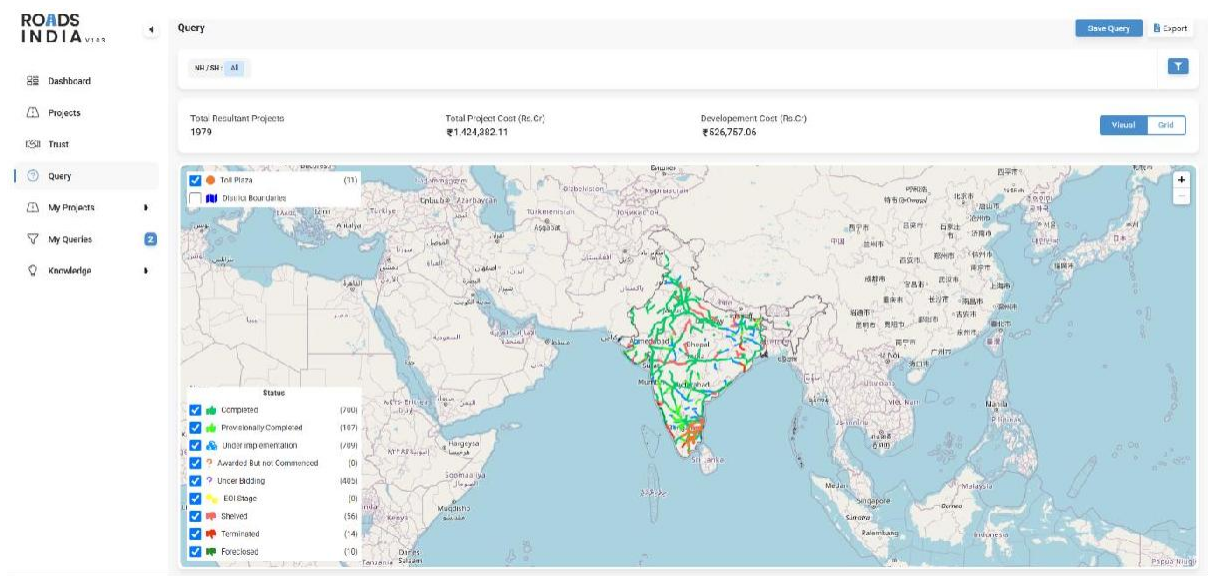
**ANNEXURE**

**1. RoadsIndia - Screens**

• **Dashboard**



• **National Highway (NH) projects geo-visualized by status**



- Toll-Plaza mapped to the NH stretch: Total vehicle count & Toll revenue

**ROADS INDIA** Toll Plaza's data now in Roads India Service

**Over 1000 Toll Plaza's**

**Total Vehicle Count**  
24 months data

**Total Revenue**  
Analyse the Trend Seasonality & a lot more along with other data-sets on NH Projects

**Geo-visualisation of Toll data on the stretches**

MONTH	NO OF VEHICLES	COLLECTED AMOUNT (RS)	NO OF VEHICLES	COLLECTED AMOUNT (RS)
April	429,910	17,14,40,955.00	3,21,247	7,57,78,222.00
May	442,114	17,13,22,276.00	4,48,816	8,77,78,022.00
June	377,353	7,96,07,975.00	4,28,118	8,59,83,922.00
July	328,841	10,47,74,122.00	2,74,887	7,83,82,222.00
August	343,834	7,25,58,882.00	4,02,227	8,71,33,922.00
September	377,349	4,70,96,742.00	4,44,214	7,54,47,412.00
October	639,223	10,94,76,762.00	4,42,219	8,84,48,222.00
November	437,101	7,94,76,922.00	4,12,779	8,53,83,922.00
December	442,102	8,08,90,222.00	4,42,214	8,53,83,922.00
January	372,441	10,04,76,762.00	3,24,718	7,83,82,222.00
February	347,274	8,88,22,222.00	4,02,227	8,71,33,922.00
March	464,717	7,43,76,762.00	4,33,716	8,84,48,222.00

**Trend Analysis - Apr-2023 to Mar-2024**

- Classified Vehicle Traffic Count & Toll Revenue for Granular insights

**ROADS INDIA**

**Manguli Toll Plaza (Jul - 2023-2024)**

Car/Jeep/Van		LCV		Bus/Truck	
Count	Amount	Count	Amount	Count	Amount
3,83,428	₹ 4,33,74,470.00	15,979	₹ 31,04,455.00	63,323	₹ 2,61,74,610.00

Upto 3 Axle Vehicle		4 to 6 Axle		OSV	
Count	Amount	Count	Amount	Count	Amount
44,165	₹ 2,92,67,425.00	1,04,199	₹ 7,04,97,615.00	256	₹ 1,38,480.00

**No of Vehicles**

**Total: 6,11,350**

**Collected Amount**

**Total: ₹ 17,25,57,055.00**



- **Advanced filtering by multiple indicators**

## 2. **Project events & Funding details (More than 2000 projects under EPC and PPP modes)**

Section	Indicators
Project Information	Project Name
	Stretch
	Scheme
	Package
	SPV/Company
	Company CIN
	Developer
	Developer CIN
	Independent Engineer
	Other Members
	State(s)
	District(s)
	Mode
	Project Status
	Highway Type - NH/SH
NH/SH No	
Phase	

	Lane	
	Stretch (in kms)	
	Lane (in kms)	
<b>Events</b>	RFP	
	RFQ	
	Letter Of Award	
	Concession Period (Years)	
	Construction Period (Months)	
	Concession Agreement Signed	
	Financial Closure	
	Construction Commencement	
	Scheduled Project Completion	
	Anticipated Completion	
	Provisional Commercial Operation Date (PCOD)	
	Actual Completion	
	<b>Cost &amp; Funding</b>	Basis Of Award
		Annuity (Rs. Cr)
Grant (Rs. Cr)		
Negative Grant (Rs. Cr)		
Project Cost (Rs. Cr)		
Revised Project Cost (Rs. Cr)		
Dev Cost (Rs. Cr)		

	Equity (Rs. Cr)
	Long Term Loan (Rs. Cr)
	Debt (Rs. Cr)
	Incremental Cost (Rs. Cr)
	TPC per km (Rs. Cr)
	Time Overrun (Months)

### 3. Toll Plaza details (Over 1000 toll plazas)

Section	Indicators
<b>Toll Plaza</b>	NETC Code
	State - Toll location
	District - Toll location
	City - Toll location
	Plaza Distance (in kms)
	Tollable Length (in kms)
	Chainage (in kms)
	Design Capacity (PCU)
	Plaza Authority
	Project Implementation Unit (PIU)
	Regional Office (RO)
	Concessionaire
	Concessionaire Type
	Capital Cost
	Commercial Operation Date
	Concession period - Start date
	Concession period - End date
	Concession Years
	Count of Vehicles - Electronic Toll Collection
	Count of Vehicles – Based on vehicle category
	Collected Amount (Rs.) - Electronic Toll Collection
	Collected Amount (Rs.) - Based on vehicle category
	Toll Tariff by vehicle type - Single Journey
	Toll Tariff by vehicle type - Return Journey
	Toll Tariff by vehicle type - Monthly Pass
	Toll Tariff by vehicle type - Registered within district
	Fee Effective Date
	Due date of toll revision
Nearest Police Station	
Nearest Hospitals	

#### 4. Special Purpose Vehicle (SPV) Financials

Section	Indicators
<b>Profit &amp; Loss Summary</b>	Net Sales
	Total Expenditure
	PBDITA (excl. OI)
	PBDITA (Incl. OI)
	PBIDTA %
	PBIT
	PBIT %
	Interest
	Interest %
	Profit After Tax (PAT)
	PAT %
<b>Source of Funds</b>	Shareholder's Funds
	Total Non-Current Liabilities (Rs. Cr)
	Total Current Liabilities (Rs. Cr)
	Total Liabilities (Rs. Cr)
<b>Application of Funds</b>	Total Non-Current Assets (Rs. Cr)
	Total Current Assets (Rs. Cr)
	Total Assets (Rs. Cr)
<b>Key Ratio</b>	Total Debt (Rs. Cr)
	Debt/Equity ratio (in Times)
	Current Ratio (In Times)
	Net Working Capital (Rs. Cr)
	ROCE (%)
	RONW (%)
	Receivable days (No.)
	Payable days (No.)
	PBIDTA %
	PBIT %
	PAT %
<b>Cash Flow</b>	Cash From Operating Activities (Rs. Cr)
	Cash Flow from Investing Activities (Rs. Cr)
	Cash from Financing Activities (Rs. Cr)
	Net Cash Inflow / Outflow (Rs. Cr)





**For any queries, Contact:**



## **Bharat Book Bureau**

808, Real Tech Park, Sector - 30A, Vashi, Navi Mumbai, India – 400703.

Website: [www.bharatbook.com](http://www.bharatbook.com)

Email: [info@bharatbook.com](mailto:info@bharatbook.com)

Phone: +91 22 68327185

Mobile: +91 9223767111