



BMI

a FitchSolutions Company

Country Risk & Industry Research

Offering Real-World Insights and Trusted Intelligence to Support Your Academic and Institutional Excellence



BMI

a FitchSolutions Company

Country Risk & Industry Research

Since 1984 BMI has delivered high quality business intelligence that helps students better understand and contextualize global events as they happen, particularly in emerging and frontier markets.

Our global team of more than 110 economists, political risk experts and industry analysts has a strong track record in delivering frequent, forward-looking insights, data and forecasts across all markets – developed, emerging and frontier – built on our history, our expertise and our strong relationships with our clients around the world.

We offer authoritative, in-depth coverage of 200+ markets and more than 20 industries with frequent updates, consistent data and comparable analysis; from the Caribbean to China, from Healthcare to Infrastructure.

BMI integrates political, macroeconomic and industry expertise into all of our analysis so that students benefit from understanding how each has an impact on the other in their chosen markets. We call this 'Connected Thinking'.

Country Risk

BMI has a wide range of products to suit your needs including over 150 individual Country Risk Reports. Each report contains in-depth data, analysis and forecasts on a country or territory's economic, political and business environment outlook over a 2-10-year horizon to give you the risks and opportunities of operating in the market. BMI also produces 21 monthly sub-regional newsletters containing essential macroeconomic analysis, risk assessment and insight into financial developments across key regions.

See pages 16-19

Industry Research

BMI publishes over 1,800 reports over 20 separate industries by country and region, containing forecasts, business environment Risk/Reward Indices, competitive intelligence and robust analysis of the latest industry developments to help you optimize the scope of your operations and investments. Also available are 41 monthly industry newsletters providing analysis, forecasts and indices for 9 main industry sectors across key regions.

See pages 5-15

Global Financial and Risk Analysis

Weekly and monthly newsletters provide global macro, political and financial market views and forecasts for major frontier, emerging and developed markets, as well as industry and corporate financing insights, and our monthly pick of FX forecasts and commodities price analysis.

See pages 20-26

Delivering Information Efficiently

All of the above products, data and analysis can be accessed in one place, through our NEW online platform. Find out more about this service on **page 4**.



Contents

Information Delivery

Academic institutions and business schools access our data, research and tools via Single Sign-On, IP Access or User Name and Password

4

Industry Research by Country

Quarterly and annual analysis and forecasts, covering more than 20 industry sectors for over 180 markets

5

BMI Technology

A service with systematic and comparable insight into digital adoption at a country and regional level, helping to quantify investment risks and opportunities

6

Industry Report Matrix

Regional tables listing the full industry market reports portfolio by country and sector

7-11

New Sustainability & Net Zero Research

These services quantify and track the evolution of ESG risks and measure progress towards net zero using Energy Transition forecasts

12

Regional Industry Insights

Monthly analysis of latest trends, regulatory changes, projects and investments for 9 main industry sectors, systematically structured across 5 regions

13

Specialist Pharmaceuticals, Medical Devices and Healthcare Service

A dedicated service outlining where business risks are most concentrated and identifying investment opportunities within the industry

14-15

Country Risk

Quarterly and annual data, analysis and forecasts over a 10-year horizon for more than 150 countries and territories

16-17

Operational Risk

Quarterly, bi-annual and annual reports examining threats from the labour market, logistics infrastructure, trade & investment regulations and crime & security for over 90 countries and territories

18-19

Regional Monitors

Monthly macroeconomic analysis and assessment of major political, economic and financial developments for 20 regions and sub regions across the globe

20-21

Global Financial and Risk Analysis

Emerging Markets Monitor – weekly analysis of market views, macroeconomic forecasts and political predictions for global emerging markets

22

Global Macro Monitor – monthly outlook on the prospects for the global economy

22

Frontier Markets Monitor – monthly views and analysis of political and economic developments in exciting but frequently overlooked markets

23

Emerging FX Monthly – monthly assessment of FX forecasts across developed and emerging markets

24

Commodities Monitor – monthly pick of commodities analysis across energy, metals, grains and softs

24

Global Strategy – monthly strategic direction for investors

25

Political Risk Strategy – monthly assessment of how political risk is affecting economies and markets

25

Special Reports

Analysis of key political and economic events as they happen and intelligence on market trends

26

BMI's Country Risk, Political Risk and Global Strategy Analysts

Meet our team of experts

27

Industry Research Analysts, Advisory & Data Professionals

Meet our team of experts

28



Information Delivered The Way You Need It

	Country Risk & Industry Research				
Delivery Channel/Product	Country Risk and Industry Indices	Country Risk and Industry Research Data	Country Risk Research	Industry and Operational Risk Research	Key Projects Data
Excel Add-In	•	•			•
Web	•	•	•	•	•
API	•	•	•	•	



Web

Access the latest country and industry research and data: Our new web portal allows you to easily explore and compare opportunities and risks across markets. Use the unique country and industry homepages as a starting point to deep dive into our rich research, forecasts, proprietary indices and data. Collate data into bespoke charts and graphs, access latest insights via our powerful search tools, and set alerts for articles and reports for your key markets, so you get notified automatically when new research is released.

For academic institutions, we offer SSO or Username/Password options.



Excel Add-In

Make our country and industry data work harder: Pull country risk and industry data, indices and project data into Excel via our Add In. Use our handy formula builder to manipulate the data with no specialist knowledge required, as our best practice techniques ensure you can draw down data at speed. Use sector analysis and country risk forecast templates to cut down the time you spend calculating and increase the time you have to dedicate to research projects.

We also provide the ability to download large quantities of data to Excel quickly and easily via our Bulk Data Export Tool.



API

Use your own systems: Our API channel integrates seamlessly with any third party or proprietary systems, allowing you to bring our data and research into a familiar environment and work with it alongside information from other sources.



BMI

a FitchSolutions Company



Industry Research Reports

BMI's extensive range of Industry Research Reports provide in-depth analysis and forecasts, covering more than 20 major industry sectors for more than 180 markets.

Use these reports to research industry trends, opportunities and risks in different countries.

The Industry Research Reports give students access to real-world insights that are used to guide business decisions in organisations around the world.

- **Budgeting and Strategic Planning** – Our proprietary and independent industry forecasts are a key input into the strategic business planning and budgetary activities of multinational corporations and investment firms
- **Manage Risk** – Our Risk/Reward indices are used by strategic planning departments to identify operational, market and country specific risks, and prioritize markets accordingly
- **Trend Analysis** – Reviews of the latest industry trends, regulatory changes and major deals, projects and investments, as used by business development teams to assess the commercial potential for their products, or forecast investment return
- **Competitor Analysis*** – Competitive landscape analysis and company profiles as used by market intelligence teams to assess activities, strategy and market position of competitors, partners and clients

Developed to aid decision-making, these reports provide reliable, stress-tested industry forecasts and growth assumptions that are used to benchmark business development plans, as well as to test other forecasts based solely on industry- or company-specific variables.

*Competitor Analysis coverage varies across the reports – please see website for details

Industry Coverage

BMI's Industry Research covers more than 180 countries and territories in Africa, the Americas, Asia, Europe and the Middle East for the following industry sectors:

- Agribusiness
- Automotives
- Banking
- Consumer & Retail
- Crime, Defence & Security*
- Education & Labour
- Food & Drink
- Healthcare**
- Infrastructure
- Insurance
- Logistics & Freight
- Transport
- Medical Devices
- Metals & Mining
- Oil & Gas
- Petrochemicals
- Pharmaceuticals
- Power & Renewables
- Real Estate
- Technology
- Telecommunications
- Tourism
- Trade & Investment Risk

*Crime, Defence & Security - annual and bi-annual publications, no quarterly updates.

** Healthcare - annual reports, no quarterly updates.



BMI

a FitchSolutions Company

BMI Technology

BMI's new Technology service fills the crucial gap for systematic and comparable insight into digital adoption at a country and regional level, helping clients to quantify investment risks and opportunities and better manage their technology investment and business strategies.



Digital Readiness Risk Index

Benchmark and compare digital maturity across countries

BMI's new, proprietary Digital Readiness Risk Index quantifies and ranks a market's attractiveness, measuring its preparedness to adopt technology against the backdrop of global digital transformation, by assessing four key pillars.



Market Sizing Forecasts

Assess market risks and opportunities

Building on BMI's comprehensive industry data suite, the new Technology service offers extensive data – which is often hard-to-find for emerging markets – ranging from data centre capacity, to digital payments, and e-commerce spending, allowing for informed market sizing analysis.



Research, Insights & Case Studies

Qualitative analysis from industry experts, enhanced by primary research

Get real-world insights into emerging technology integration from BMI's tenured analysts, enhanced by on the ground intelligence on opportunities and challenges sourced from interviews with key industry players.



Bespoke Technology Research

Respond to specific challenges with bespoke technology research

Support future strategic planning and drive thought leadership goals with BMI's bespoke research capabilities. BMI Advisory can introduce primary research methods to support your market analysis and data requirements.



Financial Technology



Digital Infrastructure: Telecommunications Towers



Agricultural Technology**



Artificial Intelligence



Digital Infrastructure: Satellites



Digital Agendas



E-Commerce



Digital Health



Cities



Digital Infrastructure: Data Centres



Mobility



Digital Infrastructure: Fibre & Subsea Cables



Semiconductors



BMI

a FitchSolutions Company

Africa Industry Research Reports by Country

	Agribusiness	Automotives	Banking	Consumer & Retail	Crime, Defence & Security	Education & Labour	Energy Transition	ESG Country	Food & Drink	Healthcare	Infrastructure	Insurance	Logistics & Freight Transport	Medical Devices	Metals & Mining*	Oil & Gas	Petrochemicals	Pharmaceuticals	Power & Renewables	Real Estate	Telecommunications	Tourism	Trade & Investment Risk
Algeria	●	●							●	▲	▲					●	●	●	▲				
Algeria & Morocco												●											
Angola		▲	●	●	▲	▲	▲	▲	▲	▲	●	▲	▲		●	●		●	●				▲
Angola, Botswana & Namibia	●																						
Benin																						▲	
Botswana		●	●	●	▲	▲	▲	▲	●	▲	●	●	▲		●			●	●			●	▲
Burkina Faso																							
Burundi																							
Cameroon	▲	▲			▲		▲	▲	▲	▲	●		▲		●	●		●			●		▲
Cameroon & Gabon																					●		
Cape Verde																							
Central African Republic																							
Chad																▲							
Congo, Dem Rep					▲		▲						▲		●								▲
Congo-Brazzaville							▲								●	●							
Congo-Brazzaville, Congo, Dem. Rep. & Burundi															●	●					●		
Congo-Brazzaville and Gabon															●	●							
Cote d'Ivoire	●	▲	●	●	▲	▲	▲	▲	●	▲	●	●	▲		●			●	●		●	●	●
Egypt	●	●	●	●	▲	▲	▲	◆	●	▲	●	●	●		●	●	●	●	●		●	●	●
Equatorial Guinea																▲							
Eswatini																							
Ethiopia	●	▲	●	●	▲	▲	◆	◆	●	▲	●	▲	▲		●	●		●	▲		●	●	▲
Ethiopia, Eritrea & Djibouti																					▲		
Gabon		▲					▲			▲	▲					●		▲					▲
Gambia & Senegal																							
Ghana	●	●	●	●	▲	▲	▲	◆	●	▲	●	●	▲		●	●		●	●		●	●	●
Ghana, Kenya & Nigeria																							
Guinea								▲														▲	
Kenya	●	●	●	●	▲	▲	▲	◆	●	▲	●	●	●	●	●	●		●	●		▲	●	●
Lesotho																							
Liberia																						▲	
Liberia & Sierra Leone																							
Libya					▲								▲			●							▲
Libya & Tunisia												▲											
Madagascar																						▲	
Malawi		▲																					
Malawi & Mozambique																					●		
Mali																							
Mali & Mauritania																						▲	
Mauritius			●			▲				▲		▲	▲					●				▲	▲
Mauritius & Seychelles																		●				▲	▲
Morocco	●	●		▲	▲	▲	▲	▲	●	▲	▲		▲	●				●	▲		●	●	●
Mozambique	●	●	●	●	▲	▲	▲	▲	▲	▲	●	●	●		●	●		▲	●			●	●
Namibia		▲	●	▲	▲	▲	▲	▲	▲	▲	●	●	●		●			●	●			●	▲
Namibia & Botswana																							
Niger																							
Nigeria	●	●	●	●	▲	▲	▲	◆	●	▲	●	●	●	●	●	●	▲	●	●		●	●	●
Rwanda																						▲	
Sao Tome & Principe																							
Senegal							▲	▲														▲	
Seychelles																							
Sierra Leone																						▲	
South Africa	●	●	●	●	▲	▲	▲	◆	●	▲	●	●	●	●	●	●	●	●	●	▲	●	●	●
Sub-Saharan Africa							▲																
Sudan					▲		▲																▲
Sudan & South Sudan		▲									●					●		●	▲		●	●	▲
Tanzania	●	●	●	●	▲	▲	▲	◆	●	▲	●	●	●	▲	●	●		●	●		●	●	●
Togo																						▲	
Tunisia			●	●	▲	▲	▲	◆	●	▲	▲		▲	▲		●		●			●		●
Tunisia, Algeria & Libya																							
Uganda	●	●	●	●	▲	▲	▲	▲	●	▲	●	●	▲	▲		●		●	●		●	●	●
West Africa																							
Zambia	●	●	●	●	▲	▲	▲	▲	●	▲	●	●	▲		●			●	●		●	●	▲
Zambia & Zimbabwe																							
Zimbabwe	●	▲	●	▲	▲	▲	▲	▲		▲	●	▲	▲		●			▲	●		●	●	▲

● Quarterly publication ▲ Annual publication ◆ Bi-annual publication

* Quarterly Global Metal Coverage Aluminium, Copper, Gold, Iron Ore, Lead, Nickel, Steel, Tin, Zinc



Americas Industry Research Reports By Country

	Agribusiness	Automotives	Banking	Consumer & Retail	Crime, Defence & Security	Education & Labour	Energy Transition	ESG Country	Food & Drink	Healthcare	Infrastructure	Insurance	Logistics & Freight Transport	Medical Devices	Mining & Metals*	Oil & Gas	Petrochemicals	Pharmaceuticals	Power & Renewables	Real Estate	Telecommunications	Tourism	Trade & Investment Risk
Argentina	●	●	●	▲	▲	▲	▲	◆	●	▲	●	▲	●	●	▲	●	▲	●	●	▲	●	▲	▲
Aruba																							
Bahamas												▲											
Barbados												▲											
Barbados & Guyana																							
Belize																							
Bermuda												●											
Bolivia							▲								●	●							
Brazil	●	●	●	●	▲	▲	▲	◆	●	▲	●	●	●	●	●	●	●	●	●	▲	●	●	●
Canada	●	●	●	●	▲	▲	▲	◆	●	▲	●	●	●	●	●	●	▲	●	●		●	▲	●
Caribbean									●												●	●	
Cayman Islands																							
Central America	●	●							●														
Central America & Caribbean															▲								
Chile		●	●	▲	▲	▲	▲	▲	▲	▲	●	●	●	●	●	●	▲	●	●	▲	●	▲	▲
Colombia	●	▲	●	●	▲	▲	▲	▲	●	▲	●	●	▲	●	●	●	▲	●	●		●	●	▲
Costa Rica										▲	●	▲	▲					●				▲	
Cuba																		▲					
Dominican Republic																							
Dominican Republic & Puerto Rico																							
Ecuador		▲			▲	▲	▲			▲	▲		▲			●		●	●				▲
El Salvador										▲	▲							▲					
Grenada																							
Guatemala										▲	●							▲					
Guyana																●							
Haiti																							
Honduras										▲	▲		▲					▲					
Jamaica												▲											
Latin America							▲																
Mexico	●	●	●	●	▲	▲	▲	◆	●	▲	●	●	●	●	▲	●	▲	●	●	▲	●	●	●
Nicaragua										▲	▲		▲					▲					
Panama							▲			▲	●	▲	▲					●					
Paraguay	▲																						
Peru	●	▲	●	●	▲	▲	▲	▲	▲	▲	●	●	●	▲	●	●	▲	●	●	▲	●	▲	▲
Puerto Rico																		▲					
Suriname																							
Trinidad & Tobago												▲				●							
United States	●	●	●	●	▲	▲	▲		●	▲	●	●	●	●	●	●	●	●	●	▲	●	●	●
Uruguay	●	▲			▲	▲					▲		▲						●				▲
Venezuela	▲	▲	●		▲		▲						▲	▲		●	▲	●	▲		▲		▲

● Quarterly publication ▲ Annual publication ◆ Bi-annual publication

* Quarterly Global Metal Coverage Aluminium, Copper, Gold, Iron Ore, Lead, Nickel, Steel, Tin, Zinc



Asia Industry Research Reports By Country

	Agribusiness	Automotives	Banking	Consumer & Retail	Crime, Defence & Security	Education & Labour	Energy Transition	ESG Country	Food & Drink	Healthcare	Infrastructure	Insurance	Logistics & Freight Transport	Medical Devices	Metals & Mining**	Oil & Gas	Petrochemicals	Pharmaceuticals	Power & Renewables	Real Estate	Telecommunications	Tourism	Trade & Investment Risk
Afghanistan																							
Asia							▲															▲	
Australia	●	●	●	●	▲	▲	▲		●	▲	●	●	●	●	●	●	▲	●	●	▲	●	●	●
Bangladesh	▲	▲	●		▲	▲				▲	●		▲	▲				●	●		●		▲
Brunei																●							
Cambodia					▲					▲	●		▲			●		●	●				▲
Cambodia, Laos & Myanmar	●	●							●												●		
China	●	●	●	●	▲	▲	▲	◆	●	▲	●	●	●	●	●	●	●	●	●	▲	●	●	●
East Timor																▲							
Fiji																							
Hong Kong, China		●	●	●	▲	▲			●	▲	●	●	●	●	●	●	●	●	▲	▲	●	●	▲
India	●	●	●	●	▲	▲	▲	◆	●	▲	●	●	●	●	●	●	●	●	●	▲	●	●	●
Indonesia	●	●	●	●	▲	▲	▲	◆	●	▲	●	●	●	●	●	●	●	●	●	▲	●	●	●
Japan	●	●	●	●	▲	▲	▲		●	▲	●	●	●	●	▲	●	▲	●	●	▲	●	●	●
Laos					▲	▲				▲	●		▲					●	●				▲
Macao, China																							
Malaysia	●	●	●	●	▲	▲	▲	▲	●	▲	●	●	●	●	▲	●	▲	●	●	▲	●	●	●
Mongolia					▲	▲					●		▲		●								●
Myanmar					▲	▲				▲	●		▲			●		●	●			▲	▲
Nepal																					▲		
New Zealand	●	●	●	▲			▲		●	▲	●	▲	●	▲		●		●	●		●	▲	
Pakistan	●	▲	●		▲	▲	▲	▲	▲	▲	▲	▲	▲	●		●		●	●	▲	●		▲
Papua New Guinea																●							
Philippines	●	●	●	●	▲	▲	▲	▲	●	▲	●	●	●	●	▲	●	●	●	●	▲	●	●	●
Singapore		●	●	●	▲	▲	▲	▲	●	▲	●	●	●	●		●	▲	●	▲	▲	●	●	●
South East Asia*															▲								
South Korea	▲	●	●	●	▲	▲	▲		●	▲	●	●	●	●		●	▲	●	●	▲	●	●	●
Sri Lanka		▲	●		▲			◆		▲	●	▲	▲					●	▲		●	▲	▲
Taiwan, China		●	●	●	▲	▲	▲	▲	●	▲	●	●	●	●		●	▲	●	▲	▲	●	●	●
Thailand	●	●	●	●	▲	▲	▲	▲	●	▲	●	●	●	●		●	●	●	●	▲	●	●	●
Vietnam	●	●	●	●	▲	▲	▲	▲	●	▲	●	●	●	●		●	▲	●	●	▲	●	●	●

● Quarterly publication ▲ Annual publication ◆ Bi-annual publication

*South East Asia - covering Vietnam, Thailand, Myanmar, South Korea, Cambodia

** Quarterly Global Metal Coverage Aluminium, Copper, Gold, Iron Ore, Lead, Nickel, Steel, Tin, Zinc



Europe Industry Research Reports By Country

	Agribusiness	Automotives	Banking	Consumer & Retail	Crime, Defence & Security	Education & Labour	Energy Transition	ESG Country	Food & Drink	Healthcare	Infrastructure	Insurance	Logistics & Freight Transport	Medical Devices	Metals & Mining**	Oil & Gas	Petrochemicals	Pharmaceuticals	Power & Renewables	Real Estate	Telecommunications	Tourism	Trade & Investment Risk
Albania																▲							
Armenia										▲								▲					
Austria		●	●				▲			▲	●	●		●				●	●		●		▲
Azerbaijan					▲		▲			▲			▲				●		●			▲	▲
Belarus						▲	▲			▲				▲				●				▲	▲
Belgium		●	●			▲	▲		▲	▲	●	●	●	●		●	▲	●	▲		●		▲
Bosnia-Herzegovina			●		▲		▲				●		▲							▲			▲
Bulgaria	▲	●	●	▲	▲	▲	▲			▲	▲	▲	▲	▲	▲	▲	▲	●	●	▲	●		▲
Central Asia*							▲															▲	
Central and Eastern Europe							▲																
Croatia			●	●	▲		▲		●	▲		▲	▲	▲		▲		●		▲	●	●	▲
Cyprus			●																				
Czech Republic		●	●	●	▲	▲	▲		▲	▲	●	▲	▲	▲	▲	●	▲	●	●	▲	●	▲	▲
Denmark		●	●	●			▲			▲	●	●	●	●		▲	▲	●	●	▲	●	▲	▲
Estonia		▲					▲			▲	▲	▲	▲	▲				▲				▲	
Finland		▲	●				▲			▲	●	▲	▲	▲	▲			●	●			▲	
France	●	●	●	●	▲	▲	▲		●	▲	●	●	●	●		●	●	●	●	▲	●	●	▲
Georgia					▲	▲	▲			▲	▲	▲	▲	▲				●	●			●	●
Germany	●	●	●	●	▲	▲	▲		●	▲	●	●	●	●	▲	●	●	●	●	▲	●	●	●
Greece	▲	▲	●		▲	▲	▲		▲	▲	●	●	●	▲		●	●	●	▲	▲	●	●	▲
Hungary		●	●	▲	▲	▲	▲		▲	▲	●	▲	●	▲		●	●	●	●	▲	●	▲	▲
Iceland																							
Ireland		▲					▲		●	▲	▲	●		▲				●	▲			●	●
Italy	●	●	●	●	▲	▲	▲		●	▲	●	●	●	●		●	●	●	●	▲	●	●	●
Kazakhstan	●		●		▲	▲	▲		●	▲	●	▲	▲		●	●		●	●		●	●	▲
Kazakhstan & Uzbekistan		▲															▲						
Kosovo and Montenegro																							
Kyrgyzstan							▲			▲			▲					●	▲				▲
Latvia		▲	●				▲			▲	▲	▲						▲				▲	
Lithuania		▲					▲			▲	▲	▲						▲				▲	
Luxembourg			●									●											
Moldova										▲								▲				▲	
Montenegro																						▲	
Netherlands		●	●	▲			▲		▲	▲	●	●	●	●		●	▲	●	●		●		▲
Nordics									●														
North Macedonia																							
Norway		▲	●				▲			▲	●	●		▲		●		●	●		▲		▲
Poland	▲	●	●	●	▲	▲	▲	▲	●	▲	●	●	●	●	●	●	●	●	●	▲	●	▲	▲
Portugal		●	●	●			▲		▲	▲	▲	▲	▲	▲		▲		●	▲		▲		▲
Romania	●	●	●	●	▲	▲	▲		●	▲	●	●	▲	▲		●	●	●	▲	▲	●	▲	▲
Russia	●	●	●	●	▲	▲	▲	▲	●	▲	●	▲	●	▲	●	●	●	●	▲	▲	▲	●	●
Serbia		▲	●	▲	▲	▲	▲		●	▲	▲	▲	▲	▲				●	▲		▲		▲
Slovakia		▲	●		▲	▲	▲			▲	▲	▲	▲	▲	▲	▲	▲	●	▲	▲	▲		▲
Slovenia			●		▲	▲	▲			▲	▲	▲	▲	▲	▲	▲	▲	●	▲		▲		▲
Spain	▲	●	●	●	▲	▲	▲		●	▲	●	●	●	●		●	●	●	●	▲	●	●	▲
Sweden		●	●				▲			▲	●	●	●	●	●			●	●		▲	▲	▲
Switzerland		▲	●			▲			▲	▲	▲	●		●				●	▲		▲		▲
Tajikistan					▲								▲						▲				▲
Tajikistan & Kyrgyzstan													▲						▲				▲
Turkiye	●	●	●	●	▲	▲	▲	◆	●	▲	●	●	●	●	▲	●	●	●	●	▲	●	●	●
Turkmenistan							▲				▲					▲			▲				▲
Turkmenistan & Uzbekistan									▲	▲		▲	▲	▲				▲		▲			▲
Ukraine	●	●	●		▲	▲	▲		▲	▲	●	●	▲	●	▲	●	●	●	●	▲	●	●	▲
United Kingdom	●	●	●	●	▲	▲			●	▲	●	●	●	●		●	●	●	●	▲	●	●	▲
Uzbekistan					▲					▲	●		▲			●		●	●				▲
Western Europe							▲																

● Quarterly publication ▲ Annual publication ◆ Bi-annual publication

* Central Asia - covering Kyrgyzstan, Tajikistan, Turkmenistan, Uzbekistan

** Quarterly Global Metal Coverage Aluminium, Copper, Gold, Iron Ore, Lead, Nickel, Steel, Tin, Zinc



BMI

a FitchSolutions Company

Middle East Industry Research Reports By Country

	Agribusiness	Automotives	Banking	Consumer & Retail	Crime, Defence & Security	Education & Labour	Energy Transition	ESG Country	Food & Drink	Healthcare	Infrastructure	Insurance	Logistics & Freight Transport	Medical Devices	Metals & Mining**	Oil & Gas	Petrochemicals	Pharmaceuticals	Power & Renewables	Real Estate	Telecommunications	Tourism	Trade & Investment Risk
Algeria	●	●					▲	◆	●	▲	▲					●	●	●	▲				
Algeria & Morocco												●											
Bahrain		●	●	●	▲	▲	▲	▲	●	▲	▲	●	▲	●		●		●		●	●		▲
Egypt	●	●	●	●	▲	▲			●	▲	●	●	●	●		●	●	●	●	●	●	●	●
Iran	●	●	●	●	▲		▲	▲	▲	▲	●	▲	●	●	●	●	●	●	●		▲		●
Iraq		●	●		▲		▲	▲	▲	▲	●		▲	●		●		●			●		▲
Israel		▲	●	●	▲	▲	▲		●	▲	▲	●	●	▲		●	●	●	●	▲	▲		●
Jordan		▲	●		▲	▲	▲	▲	▲	▲	●	▲	▲	▲				●			▲		▲
Jordan and the West Bank & Gaza																							
Kuwait		●	●	●	▲	▲	▲	▲	●	▲	●	●	●	●		●	●	●	●	●	●		▲
Lebanon		●	●	●	▲		▲			▲		▲	▲	●				●					▲
Lebanon and Syria																							
Libya					▲						▲		▲			●							▲
Libya & Tunisia												▲											
MENA*															●								
Morocco	●	●		▲	▲	▲			●	▲	▲		▲	●				●	▲		●	●	●
Oman		●	●	●	▲	▲	▲		●	▲	●	●	●	●		●		●	●	●	●	●	●
Qatar		●	●	●	▲	▲	▲	▲	●	▲	●	●	●	●		●	●	●	●	●	●	●	●
Saudi Arabia	●	●	●	●	▲	▲	▲	◆	●	▲	●	●	●	●		●	●	●	●	●	●	●	●
Tunisia		●	●	▲	▲	▲			●	▲	▲		▲	▲		●		●					●
Tunisia, Algeria & Libya																					●		
Turkiye	●	●	●	●	▲	▲			●	▲	●	●	●	●	▲	●	●	●	●	▲	●	●	●
United Arab Emirates		●	●	●	▲	▲	▲	▲	●	▲	●	●	●	●		●	●	●	●	●	●	●	●
Yemen					▲						●					●							

● Quarterly publication ▲ Annual publication ◆ Bi-annual publication

* MENA – covering Egypt, Iraq, Morocco, Saudi Arabia, Turkiye

** Quarterly Global Metal Coverage Aluminium, Copper, Gold, Iron Ore, Lead, Nickel, Steel, Tin, Zinc



BMI

a FitchSolutions Company

New Sustainability & Net Zero Research

ESG Country

BMI's ESG Country service fills the crucial gap for detailed, comparable country-level ESG data and insights, by leveraging the combined power of BMI's 40-year track record in emerging market risk analysis, and GeoQuant's high frequency risk indicators, to reduce uncertainty in medium- and long term ESG forecasting.



ESG Index

Measure environmental, social, and governance risks to businesses and economic activity

BMI's new, proprietary ESG Country Index addresses the need for country-level Environment, Social and Governance indicators. Quantify your risk exposure across 140 markets with robust ESG country data, updated on a monthly frequency, with a 10-year forecast horizon.



ESG Country Reports

In-depth analysis of the most relevant ESG risks in 55 key emerging markets

Take a deeper dive into the impact of ESG on trade, industry, politics and the macroeconomic outlook, with country-level insight into economic sustainability expectations, political risk, growth, and fiscal impacts and comparison with regional peers.



Bespoke ESG Research

Respond to specific challenges with bespoke ESG research

Support future strategic planning and drive ESG thought leadership programs with BMI's bespoke research capabilities. BMI Advisory can introduce primary research methods to support your market analysis and data requirements.

Energy Transition

Assess the impact of the energy transition and the journey to net-zero emissions at a country level.



Energy Transition Index

Quantify Energy Transition opportunity and risk

BMI's new, proprietary Energy Transition Index directly compares how markets will address key policy challenges and balance competing priorities, quantifying the ability of each to transition to a low carbon economy, by assessing four key pillars.



Country Reports

Assess country-level energy transition challenges

Understand the energy transition profile of 60+ key markets with dedicated analysis of the energy mix, energy emissions, energy efficiency, low carbon technology and hydrogen outlook. Assess the impact of net-zero emissions policies on trade, key industries, political risk and the macroeconomic outlook.



Green Hydrogen Investment Suitability Index

Uncover investment opportunities in Green Hydrogen

Rank investment opportunities for Green Hydrogen development and investment across markets with the BMI Green Hydrogen Investment Suitability Index, assessing market readiness with inputs including the growth of renewables, conditions for energy sector investment, the size of existing and future hydrogen offtake, and hydrogen industry expertise in each country.



Data & Forecasts

Form data-driven views, compare market trajectories and identify growth opportunities

Fuel data analysis and models with 10-year energy transition market forecasts and 30 years of historical data with 20+ energy transition indicators per country. Our comprehensive and robust data set includes sub-indicators for coal, gas, petroleum and other liquids, nuclear, hydropower and renewables.



BMI

a FitchSolutions Company



Industry Insights (published monthly)

The 41 monthly Industry Insights are systematically structured on a regional and country by-country basis to provide you with analysis, forecasts and ratings for 9 main industry sectors.

Insights include analysis of the latest trends, regulatory changes, projects and investments for each Industry, featuring BMI's independent 5-year industry forecasts for each country market. Combined with competitive intelligence on the growth strategies of the leading national and multinational companies, the Insights allow you to track key developments across regional markets and assess their impact as well as identify new investment or trading opportunities.

Agribusiness Insights

Covers production and consumption of key commodities, as well as trends in related sectors such as fertiliser, seeds and machinery

Available editions: Americas, Asia Pacific, Europe, Middle East & Africa

Automotives Insights

From passenger cars to commercial vehicles and coaches, includes intelligence on leading manufacturers and component suppliers

Available editions: Americas, Asia Pacific, Emerging Europe, Middle East & Africa, Western Europe

Food & Drink Insights

Latest analysis of the food, drink and mass grocery retail industries

Available editions: Americas, Asia Pacific, Emerging Europe, Middle East & Africa, Western Europe

Infrastructure Insights

Analysis of projects, companies and key trends surrounding the transport and energy & utilities infrastructure sectors

Available editions: Americas, Asia Pacific, Europe, Middle East & Africa

Mining Insights

Covers investment and production for key minerals including coal, iron ore, gold and base metals

Available editions: Americas, Asia Pacific, Europe, Middle East & Africa

Oil & Gas Insights

Latest analysis in Upstream, midstream, downstream, LNG and the oil field services segments, as well as regulatory analysis and energy policy analysis

Available editions: Americas, Asia Pacific, Emerging Europe, Middle East & Africa, Western Europe

Pharmaceuticals & Healthcare Insights

Focuses on key developments in the prescription, OTC and generic segments

Available editions: Americas, Asia Pacific, Emerging Europe, Middle East & Africa, Western Europe

Power & Renewables Insights

Covers all major electricity generation fuels, focusing on generation, capacity and consumption. Includes analysis on regulatory environments, subsidy schemes and technology advances

Available editions: Americas, Asia Pacific, Europe, Middle East & Africa

Telecommunications Insights

Assesses growth drivers, inward investment strategies and network rollout plans

Available editions: Americas, Asia Pacific, Emerging Europe, Middle East & Africa, Western Europe



Pharmaceuticals, Medical Devices and Healthcare Service

Experts in the field for over 30-years, BMI's Pharmaceuticals, Medical Devices and Healthcare Intelligence Service is second-to-none.

The service provides insight on this fast paced and rapidly developing sector with specialist products and company intelligence providing information at both a macro and micro level when you need it most.

Pharmaceuticals

Whether your approach is technological or therapeutic, market or indication based, our analysts provide strategy-guiding resources covering the following sub-sectors:

- **Biosimilars** – In-depth quarterly reviews and analysis reports on the rapidly evolving biosimilars market, with detailed commentary on regulatory developments, company profiles and extensive product and pipeline analysis.
- **Cancer** – Unrivalled coverage of the ever-changing anti-cancer drugs market with a daily updated news subscription services and extensive reports detailing the global cancer drug industry.
- **Central Nervous System** – Coverage on all drugs across key therapy areas within our extensive newsletter and in-depth analysis reports on key pipeline products within the growing CNS drugs market.
- **Generics** – Extensive analysis of the opportunities, operating environments and companies within this dynamic market. Whether this is through fortnightly news updates or within our range of thorough market reports.
- **Market Analysis** – Extended analysis reports for 116 countries and territories, including market size and growth forecasts, with trade data, distribution access and analysis of key players, and regulatory overviews. Build bespoke regional collections or gather more data with Fact Books and Forecast reports.
- **Pharmaceutical Manufacturing Facilities Key Projects Data** – a comprehensive catalogue of 3,400 manufacturing facilities globally operated by 133 leading pharmaceutical and medical device companies.

Medical Devices

Our extensive portfolio provides up to date analysis on all key areas within the industry, including developments in curing, monitoring, and diagnosing disease, along with advances in wound management and trauma care.

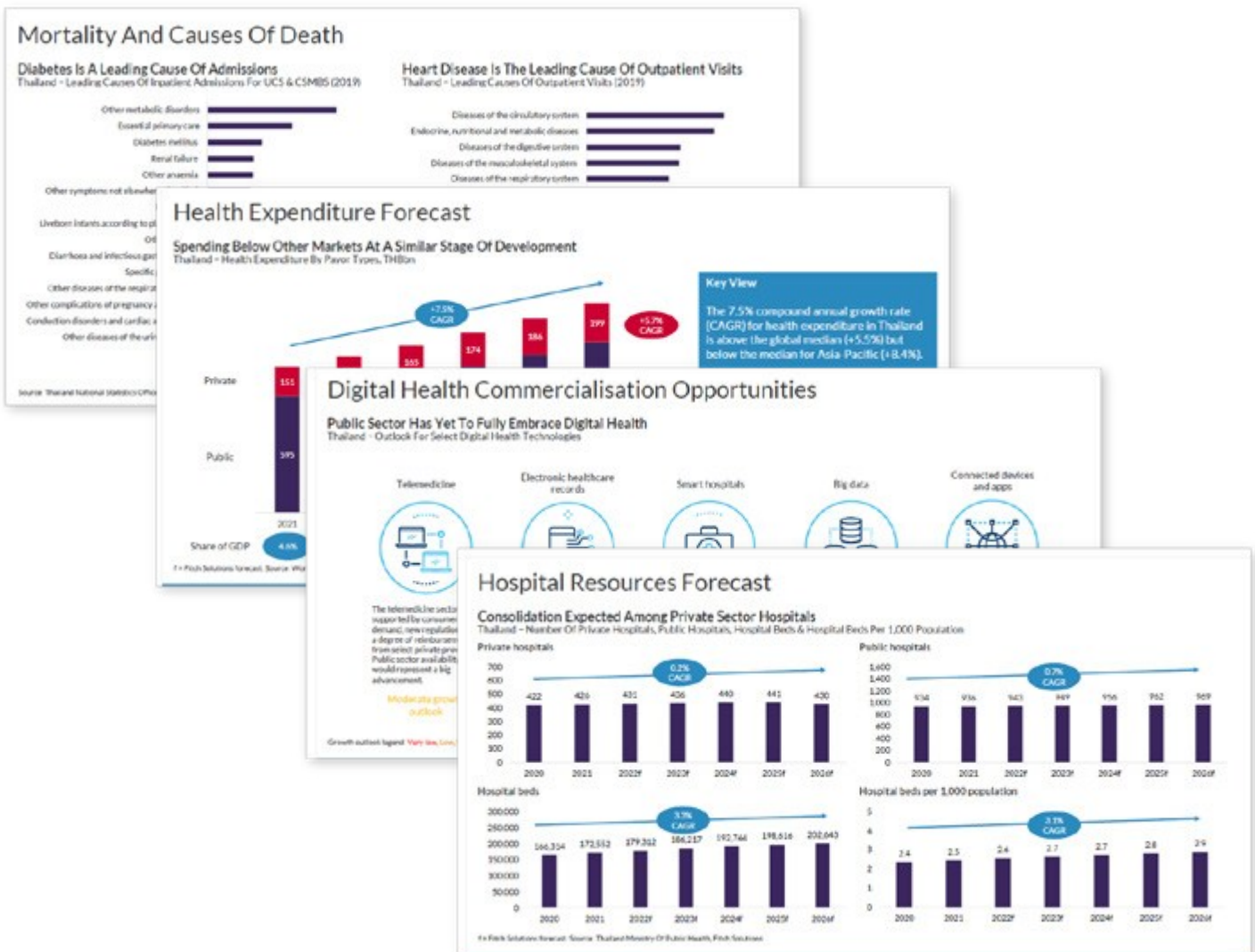
- **Diagnostics** – Extensive fortnightly news coverage with company activities, mergers & acquisitions and major product developments.
- **Drug Delivery** – Unparalleled coverage of the Drug Delivery sector ranging from infusion pumps to transdermal delivery with everything in-between, covering all major technology areas with daily-updated intelligence channels, monthly newsletters and in-depth reports covering over 100 leading companies.
- **Imaging** – Understand regulatory changes, future market growth and the latest company and product updates, with daily news, in-depth market reports and extensive archives. Covering everything from ultrasounds to bone densitometry within the diagnostic and molecular imaging industry.
- **Market Analysis** – Expert assessments on the outlook for 75 countries and territories, including market size and growth forecasts for 40 equipment categories, with trade data, distribution access and analysis of key players. Build bespoke regional collections or gather more data with Fact Books and Forecast reports.
- **Orthopaedics** – Whether it is within the extensive monthly news service or detailed analysis reports, BMI provides comprehensive overviews and in-depth analysis of developments across the entire orthopaedics market, covering corporate, product and R&D developments, and more.



Healthcare Service

From government and private healthcare expenditure to digital health strategies. Our data-led service helps students understand demand for healthcare products and services in over 100 markets.

- Our analysts monitor developments across the global healthcare industry including expenditure, government health budgets, digital health policies and company news, with specialist insight into the latest developments in emerging markets.
- Market overviews for 108 countries including 10-year forecasts for public and private healthcare expenditure, and analysis of systems, stakeholders, regulations, resources, activity, and advancements in digital health.
- Up to 25-year historical data and 10-year forecasts for 200+ indicators across 108 markets, including hospitals, physicians, nurses, inpatient admissions, outpatient visits, surgical procedures and demographics.
- Exportable Excel Datapacks for 108 markets can be accessed directly from the annual reports and include all the latest sub-national and country-specific healthcare data and forecasts for each market.





BMI

a FitchSolutions Company



Country Risk

Helping students understand and contextualise the global political, economic and business environment.

Comprehensive and systematic analysis, with quarterly reports for more than 200 markets.

Economic Outlook:

- **Full 10 Year Forecasts with Data for Key Macroeconomic Variables** – Including GDP (real growth and per capita), population, inflation, current account balance and exchange rate.
- **Comprehensive Risk Indices** – Ranks each country or territory both regionally and globally for economic and political risk.
- **GDP by Expenditure Outlook** – Assesses the makeup of GDP by expenditure, with our key views on how the fundamental drivers of economic growth will evolve over the next 10 years.
- **Full Assessment of the External Position** – Examines both structural fundamentals and latest events to give a complete picture of the international investment position and the overall external debt outlook for a 10-year horizon.
- **Monetary Policy Uncovered** – What are the current policy objectives of the central bank, its previous performance and policy direction going forward? We provide a 10-year outlook on inflation and interest rate dynamics.
- **Complete Evaluation of the Fiscal Position** – In addition to assessing the fiscal and public debt outlook over a 10-year period, we look at the main categories of government revenue and expenditure, assess the relative size of spending in the economy, current spending trends and likely future policy.
- **The Impact of Global Macro Change** – Annual forecasts for major commodities, inflation, interest and exchange rates. This key section assesses the underlying growth dynamics for emerging and developed markets and the global macro outlook.

Political Outlook:

- **Track, monitor and assess political risk in 200+ markets** – Country-level insights underpinned by high-frequency GeoQuant political risk data, help students track the impact of political events over time.
- **BMI Political Risk Index** – Incorporating monthly scores from GeoQuant for Political Risk, Security, Society and Governance.
- **Current Administration and Policy-Making** – Advance warning of threats to continuity of economic policy and likely changes to the business operating environment.
- **Political Outlook** – Examines structural risks to the stability of each country or territory's political system and the dominant public.

Plus:

- **Unique Economic and Political SWOT Analysis** – Summarising the Strengths, Weaknesses, Opportunities and Threats for each country or territory in the region at a glance.

About GeoQuant

GeoQuant is an innovative AI-driven data and technology company acquired by Fitch and now part of BMI. By fusing PhD-level political and computer science, GeoQuant generates high-frequency, quantitative measures of political risk that are systematic, back-testable, and predictive.



Country Risk Coverage

Africa

- Algeria
- Angola
- Benin*
- Botswana
- Burkina Faso*
- Burundi*
- Cameroon
- Cape Verde*
- Chad*
- Congo-Brazzaville and Gabon
- Cote d'Ivoire
- Democratic Republic of Congo
- Egypt
- Equatorial Guinea*
- Eswatini
- Ethiopia
- Gambia and Senegal
- Ghana
- Guinea*
- Kenya
- Lesotho
- Liberia and Sierra Leone
- Libya
- Madagascar*
- Malawi*
- Mali*
- Mauritius
- Morocco
- Mozambique
- Namibia
- Niger*
- Nigeria
- Rwanda
- Sao Tome and Principe*
- Seychelles*
- South Africa
- Sudan and South Sudan
- Tanzania
- Togo*
- Tunisia
- Uganda

- Zambia
- Zimbabwe

Americas

- Argentina
- Aruba*
- Bahamas*
- Barbados and Guyana
- Belize*
- Bermuda*
- Brazil
- Canada
- Cayman Islands*
- Central America
- Chile
- Colombia
- Cuba
- Dominican Republic and Puerto Rico
- Ecuador
- Grenada*
- Haiti*
- Jamaica
- Mexico
- Panama
- Peru
- Suriname*
- Trinidad & Tobago
- United States
- Uruguay
- Venezuela

Asia

- Afghanistan*
- Australia
- Bangladesh
- Brunei*
- Cambodia
- China
- East Timor*
- Fiji*
- Hong Kong, China
- India
- Indonesia

- Japan
- Laos
- Macao, China
- Malaysia
- Mongolia
- Myanmar
- New Zealand
- Pakistan
- Papua New Guinea*
- Philippines
- Singapore
- South Korea
- Sri Lanka
- Taiwan, China
- Thailand
- Vietnam

Europe

- Albania
- Armenia
- Austria
- Azerbaijan
- Belarus
- Belgium
- Bosnia-Herzegovina
- Bulgaria
- Central Asia
- Croatia
- Cyprus
- Czech Republic
- Denmark
- Estonia
- Finland
- France
- Georgia
- Germany
- Greece
- Hungary
- Iceland
- Ireland
- Italy
- Kazakhstan
- Kosovo and Montenegro
- Latvia

- Lithuania
- Luxembourg*
- Moldova*
- Netherlands
- North Macedonia
- Norway
- Poland
- Portugal
- Romania
- Russia
- Serbia
- Slovakia
- Slovenia
- Spain
- Sweden
- Switzerland
- Turkiye
- Ukraine
- United Kingdom

Middle East

- Bahrain
- Iran
- Iraq
- Israel
- Jordan and the West Bank & Gaza
- Kuwait
- Lebanon and Syria
- Oman
- Qatar
- Saudi Arabia
- United Arab Emirates
- Yemen

Published quarterly*

*with the exception of asterisked reports which are published annually



Operational Risk

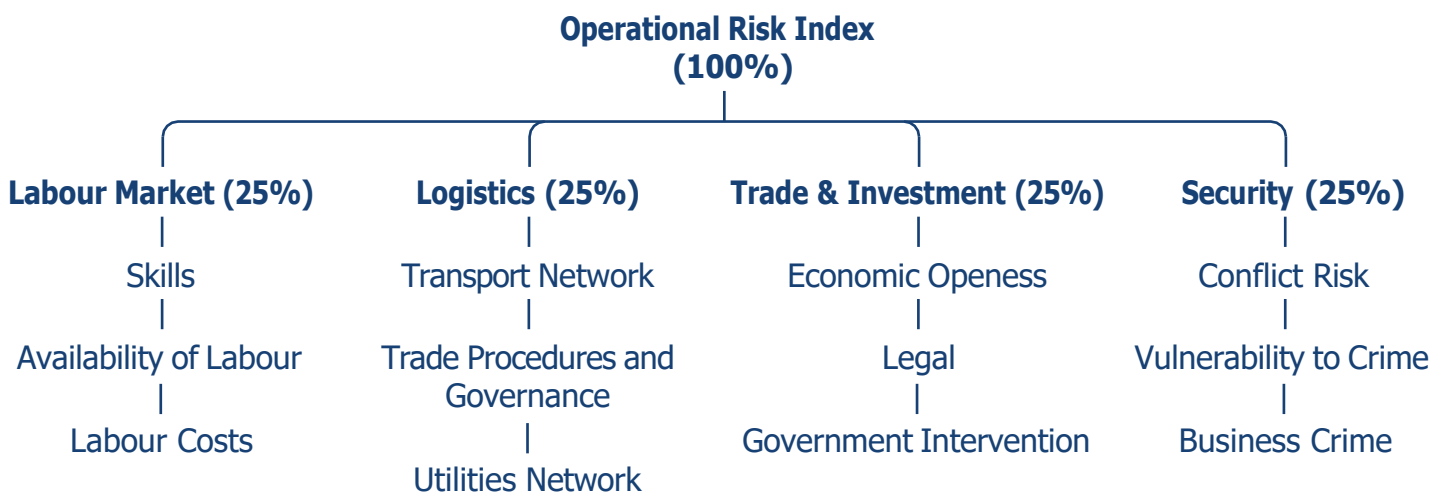
From logistics and security risks, to labour market and trade & investment risks. Compare the ease of doing business in more than 200 markets with expert insight into the factors that could impact market entry and supply chains, or disrupt day-to-day activities.

Used by risk managers, government representatives, consultants and HR professionals, the reports covering 90 individual markets inform you of the practicalities and major risks of operating in a country or territory. The reports assess threats stemming from the labour market, logistics infrastructure, trade & investment regulations and crime & security. Together with our Operational Risk Indices, this service provides students with real-world insight into additional risk dimensions.

The reports cover 4 key areas of risk:

- **Education & Labour** – Assess the availability and flexibility of skilled labour, with comparisons of education systems, labour costs, demographics, employment rates and legislation, social security, public healthcare systems, and unionization.
- **Logistics & Freight Transport** – Understand the strengths and weaknesses of each country’s supply chain and transport and utilities infrastructure, revealing the implications manufacturing, distributing, or contracting services in different markets.
- **Trade & Investment** – Evaluate the trade policies and agreements, legal systems, and banking and taxation requirements that could impact operations, helping you compare and prioritize the most attractive markets.
- **Crime, Defence & Security** – Stay alert to the security threats to staff and business operations that might stem from terrorism, political violence, war, and criminal activities, and understand each country’s capacity and ability to provide protection.

Operational Risk Breakdown





BMI

a FitchSolutions Company

Operational Risk Research Reports by Country

Africa	Crime, Defence & Security	Education & Labour	Logistics & Freight Transport	Trade & Investment Risk
Angola	▲	▲	▲	▲
Botswana	▲	▲	▲	▲
Cameroon	▲	▲	▲	▲
Congo, Dem Rep	▲	▲	▲	▲
Cote d'Ivoire	▲	▲	●	●
Egypt	▲	▲	●	●
Ethiopia	▲	▲	▲	▲
Gabon	▲	▲	▲	▲
Ghana	▲	▲	▲	●
Kenya	▲	▲	●	●
Libya	▲	▲	▲	▲
Mauritius	▲	▲	▲	▲
Morocco	▲	▲	▲	●
Mozambique	▲	▲	●	●
Namibia	▲	▲	●	▲
Nigeria	▲	▲	●	●
Rwanda	▲	▲	▲	●
South Africa	▲	▲	●	●
Sudan	▲	▲	▲	▲
Tanzania	▲	▲	●	●
Tunisia	▲	▲	▲	●
Uganda	▲	▲	▲	▲
Zambia	▲	▲	▲	▲
Zimbabwe	▲	▲	▲	▲

Asia	Crime, Defence & Security	Education & Labour	Logistics & Freight Transport	Trade & Investment Risk
Australia	▲	▲	●	●
Bangladesh	▲	▲	▲	▲
Cambodia	▲	▲	▲	▲
China	▲	▲	●	●
Hong Kong, China	▲	▲	▲	▲
India	▲	▲	●	●
Indonesia	▲	▲	●	●
Japan	▲	▲	●	●
Laos	▲	▲	▲	▲
Malaysia	▲	▲	●	●
Mongolia	▲	▲	▲	●
Myanmar	▲	▲	▲	▲
New Zealand	▲	▲	●	▲
Pakistan	▲	▲	▲	▲
Philippines	▲	▲	●	●
Singapore	▲	▲	●	●
South Korea	▲	▲	●	●
Sri Lanka	▲	▲	▲	▲
Taiwan, China	▲	▲	●	●
Thailand	▲	▲	●	●
Vietnam	▲	▲	●	●

Europe	Crime, Defence & Security	Education & Labour	Logistics & Freight Transport	Trade & Investment Risk
Azerbaijan	▲	▲	▲	▲
Belarus	▲	▲	▲	▲
Belgium	▲	▲	●	▲
Bosnia-Herzegovina	▲	▲	▲	▲
Bulgaria	▲	▲	▲	●
Croatia	▲	▲	▲	▲
Czech Republic	▲	▲	▲	▲
France	▲	▲	●	▲
Georgia	▲	▲	▲	●
Germany	▲	▲	●	●
Greece	▲	▲	●	▲
Hungary	▲	▲	●	▲
Italy	▲	▲	▲	●
Kazakhstan	▲	▲	▲	▲
Kyrgyzstan	▲	▲	▲	▲
Netherlands	▲	▲	●	▲
Poland	▲	▲	●	▲
Romania	▲	▲	▲	▲
Russia	▲	▲	●	●
Serbia	▲	▲	▲	▲
Slovakia	▲	▲	▲	▲
Slovenia	▲	▲	▲	▲
Spain	▲	▲	●	▲
Switzerland	▲	▲	▲	▲
Tajikistan	▲	▲	▲	▲
Turkiye	▲	▲	●	●
Ukraine	▲	▲	▲	▲
United Kingdom	▲	▲	●	●
Uzbekistan	▲	▲	▲	▲

Americas	Crime, Defence & Security	Education & Labour	Logistics & Freight Transport	Trade & Investment Risk
Argentina	▲	▲	●	▲
Brazil	▲	▲	●	●
Canada	▲	▲	●	●
Chile	▲	▲	●	▲
Colombia	▲	▲	▲	▲
Costa Rica	▲	▲	▲	▲
Ecuador	▲	▲	▲	▲
Honduras	▲	▲	▲	▲
Mexico	▲	▲	●	●
Nicaragua	▲	▲	▲	▲
Panama	▲	▲	▲	▲
Peru	▲	▲	●	▲
United States	▲	▲	●	●
Uruguay	▲	▲	▲	▲
Venezuela	▲	▲	▲	▲

Middle East	Crime, Defence & Security	Education & Labour	Logistics & Freight Transport	Trade & Investment Risk
Bahrain	▲	▲	▲	▲
Iran	▲	▲	●	●
Iraq	▲	▲	▲	▲
Israel	▲	▲	▲	▲
Jordan	▲	▲	▲	▲
Kuwait	▲	▲	●	▲
Lebanon	▲	▲	▲	▲
Oman	▲	▲	●	●
Qatar	▲	▲	●	●
Saudi Arabia	▲	▲	●	●
United Arab Emirates	▲	▲	●	●
Yemen	▲	▲	●	●

● Quarterly publication ▲ Annual publication



BMI

a FitchSolutions Company

Regional Monitors (published monthly)

BMI's range of 20 monthly regional monitors provide you with essential macroeconomic analysis and risk assessment of major political, economic and financial developments across Africa, Asia, Emerging Europe, Latin America and the Middle East.

The Monitors give you regular appraisals of country risk, clear insights into economic and financial trends and advance warning of key changes in the business environment.

With succinct analyses, hard-to-find data and authoritative 12 and 24-month forecasts covering government, economy, finance and the business environment, the Monitors answer strategic information needs, helping executives worldwide make better-informed decisions.

Features include:

- **Country-by-Country Coverage** – with essential news, analysis and forecasts for your markets
- **Risk-Rating System** – short- and long-term country ratings for political, economic and business environment risk
- **2-year Economic Forecast Scenarios** – BMI's macroeconomic forecasts and latest available data from primary sources, alongside analysis of latest macroeconomic developments

Use the Monitors to

- **Plan investment strategies** by fully assessing each individual market within a region, using BMI's systematic country-by-country coverage backed by a wealth of charts, graphs and tables
- **Adjust existing strategies** by anticipating and evaluating key changes in political, macroeconomic and business environment risk with BMI's in-depth Country Risk Summaries
- **Plan for growth and development across markets** using the 12 and 24-month forecasts for all major economic indicators
- **Identify potential risks and opportunities** through detailed business environment analysis, outlining recent and likely changes in government policies
- **Political Risk Assessments** – analysing government stability, key policy developments and political opposition
- **Business Environment Risk** – analysis of government policy on inward investment, trade, privatisation and economic reform, plus MNC developments



20 Regional Monitors

Africa Monitors

- **East and Central Africa**
Democratic Republic of Congo
Kenya
Sudan
Tanzania
Uganda
- **North Africa**
Algeria
Egypt
Libya
Morocco
Tunisia
- **Southern Africa**
Angola
Botswana
Madagascar
Mauritius
Mozambique
Namibia
South Africa
Zambia
Zimbabwe
- **West Africa**
Cameroon
Côte d'Ivoire
Gabon
Ghana
Nigeria

Asia Monitors

- **Australasia and South Pacific**
Australia
East Timor
Fiji
Kiribati
New Zealand
Papua New Guinea
Salomon Islands
Tuvalu
Samoa
Vanuatu
- **China and North East Asia**
China
Hong Kong, China
Mongolia
Taiwan, China
North Korea
South Korea
- **South Asia**
Afghanistan
Bangladesh
India
Pakistan
Sri Lanka
- **South East Asia Vol 1**
Cambodia
Laos
Myanmar
Thailand
Vietnam
- **South East Asia Vol 2**
Indonesia
Malaysia
The Philippines
Singapore

Emerging Europe Monitors

- **Central Europe and Baltics**
Czech Republic
Estonia
Hungary
Latvia
Lithuania
Poland
Slovakia
- **South East Europe**
Albania
Bosnia-Herzegovina
Bulgaria
Croatia
Kosovo
Montenegro
North Macedonia
Romania
Serbia
Slovenia
Turkiye
- **Russia and the CIS**
Armenia
Azerbaijan
Belarus
Georgia
Kazakhstan
Kyrgyzstan
Moldova
Russia
Tajikistan
Turkmenistan
Ukraine
Uzbekistan

Latin America Monitors

- **Andean**
Bolivia
Colombia
Ecuador
Peru
Venezuela
- **Brazil**

Caribbean

- Aruba
Bahamas
Barbados
Belize
Bermuda
Cayman Islands
Cuba
Dominican Republic
Haiti
Grenada
Guyana
Jamaica
Puerto Rico
St Kitts & Nevis
Suriname
Trinidad & Tobago
- **Central America**
Costa Rica
El Salvador
Guatemala
Honduras
Nicaragua
Panama
- **Mexico**
- **Southern Cone**
Argentina
Chile
Paraguay
Uruguay

Middle East Monitors

- **East Med**
Israel
Jordan
Lebanon
Syria
Turkiye
West Bank & Gaza
- **The Gulf**
Bahrain
Kuwait
Iran
Iraq
Oman
Qatar
Saudi Arabia
UAE
Yemen



Emerging Markets Monitor (published weekly)

Emerging Markets Monitor (EMM) brings you a weekly top-down and bottom-up, fully integrated perspective of emerging markets and their relationships with the US, eurozone and Japan.

Analysis of market views and assessments of countries and regions (on a global, inter and intra-regional level), combined with macroeconomic forecasts and political predictions, gives students at the world's leading business schools a holistic view of emerging markets risk.

EMM identifies global trends and market correlations, providing you with clear asset class strategies to help inform strategic investment decisions.

Use EMM to:

- **Sharpen your forecasting**, using EMM's analysis of equities, currencies, fixed-income instruments and commodities, including short, medium and long term views and coverage of smaller 'frontier economies'
- **Implement successful foreign exchange strategies** using EMM's short-term and 2 year forecasts for more than 60 currencies against the US dollar, euro and yen
- **Manage commodity price volatility risk** with EMM's coverage of metals, energy and agricultural commodities, including short-term technical views and long-term market dynamics
- **Identify relative asset class strategies** using EMM's tables, giving you an instant outline of key views and supporting rationale on regional equities, currencies and fixed income products

Emerging Markets Monitor is essential reading for asset managers, investment professionals and senior level executives seeking reliable analysis on emerging global trends and risks to financial markets and economic performance worldwide.

Global Macro Monitor (published weekly)

Global Macro Monitor is essential reading for strategic planners, procurement professionals, risk managers and senior company executives who need an independent perspective on the potential impact of global macroeconomic change.

Global Macro Monitor (GMM) provides students and researchers with a powerful 'one-stop' monthly outlook on prospects for the global economy. The top down, global macro approach is used by economists and strategic planners in global corporations to make better informed commercial, investment and strategic decisions.

Get the real-world insights as used by leading multinational organisations to:

- **anticipate emerging global economic trends** and react to risks/opportunities ahead of competitors
- **Assess how major factors shaping global financial markets** will affect profitability
- **Formulate strategic plans**, using the fully integrated 5-year forecasts for growth, inflation and currencies across key states including the US, eurozone, Japan and China
- **Identify relative value asset strategies** on a regional and global basis, including equities, fixed income, currencies and commodities
- **Manage price volatility risk** for key markets including oil, metals, softs and grains using the supply/demand forecasts, price projections and technical analysis



Frontier Markets Monitor (published monthly)

Frontier Markets Monitor (FMM) is a monthly publication, providing you with exclusive views and analysis of political and economic developments in exciting, but frequently overlooked markets across the world.

Frontier Markets Monitor is the only monthly publication on the market dedicated to covering these rapidly growing economies in a 'one-stop' format. You get insightful analysis of the risks and rewards of these promising economies.

The countries and territories covered are typically small, or are large but less well integrated with the global economy than 'mainstream' emerging markets. This is due to a variety of structural factors, ranging from chronic mismanagement and isolationism to sanctions and conflict. Often these economies are growing rapidly, and have the potential to accelerate sharply, once structural impediments are overcome. In several cases, the countries and territories in question have tremendous investment opportunities over the long term, and Frontier Markets Monitor gives you regular assessment of the rewards and risks facing investors already operating in or considering entering these states.

Access the real-world insights used by investors and corporations to:

- **plan investment strategy** by fully assessing each individual market, using BMI's systematic country-by-country coverage backed by a wealth of charts, graphs and tables
- **Adjust existing strategies** by anticipating and evaluating key changes in political, macroeconomic and business environment risk with BMI's in-depth Risk Summaries
- **Plan for growth and development in frontier markets** using the 12 and 24-month forecasts for all major economic indicators
- **Identify potential risks and opportunities** through detailed business environment analysis, outlining recent and likely changes in government policies

Frontier Markets Monitor Coverage*:

- **Asia**
 - Afghanistan
 - Bangladesh
 - Bhutan
 - Cambodia
 - Laos
 - Mongolia
 - Myanmar
 - Nepal
 - North Korea
 - Sri Lanka
- **Europe**
 - Albania
 - Armenia
 - Azerbaijan
 - Bosnia
 - Georgia
 - Kosovo
 - Kyrgyzstan
 - Montenegro
 - North Macedonia
 - Tajikistan
 - Turkmenistan
 - Uzbekistan
- **South Pacific**
 - Every small island state
- **MENA**
 - Libya
 - Iran
 - Iraq
 - West Bank & Gaza
 - Yemen
- **Sub-Saharan Africa**
 - Every state except Kenya, Nigeria & South Africa

*Country coverage rotates throughout the year.



BMI

a FitchSolutions Company

Emerging FX Monthly (published monthly)

Emerging FX Monthly delivers BMI's monthly pick of FX forecasts for both developed states and emerging markets.

Get BMI's latest inflation, interest rate and exchange rate projections for all key emerging market and global economies on a monthly basis.

The newsletter includes one global round up article, followed by two developed state currency forecasts, then three emerging market FX forecasts from each region (Asia, Latin America, Emerging Europe and Middle-East/Africa). The selected forecasts include BMI's proprietary forecasts as well as a qualitative assessment of the key factors driving currency trajectory over the next two years, based on the integration of macroeconomic, political and financial market (global, regional and domestic) developments.

Coverage includes:

- **Three detailed currency forecasts** for each major EM region (Asia, Latin America, Emerging Europe and Middle-East/North Africa/Sub-Saharan Africa)
- **Two developed state forecasts**
- A monthly update of **BMI's global FX strategy**
- **Complete tables** of BMI's EM FX, interest rate and inflation forecasts

Commodities Monitor

Commodities Monitor is a monthly publication delivering the pick of commodities price analysis across energy, metals, grains and softs.

The report features BMI's proprietary price forecasts and qualitative assessments of the key factors driving price trajectory over the next five years. Commodities Monitor showcases the breadth and depth of our commodities forecasting capabilities.

The report includes one global round up article, followed by eight commodity-specific price forecasts and extensive data. The selected forecasts illustrate BMI's proprietary methodology, combining both technical and fundamental supply and demand analysis. Price forecasts leverage off extensive inhouse industry and financial market expertise to provide a holistic, stress-tested view on the key factors driving commodity prices over the next five years. In addition to the individual forecasts, clients will also receive extensive data including a complete list of BMI's price forecasts, select fundamental metrics and benchmarking of BMI's forecasts against both consensus and the futures market.

Coverage includes:

- **An update of BMI's global commodities strategy**
- **A global commodities round up**
- **Eight detailed commodity price forecasts** ranging across energy, metals, grains and softs
- **Extensive charts and tables** detailing BMI's price forecasts and select fundamental metrics
- **Benchmarking of BMI's forecasts** against both consensus and the futures market
- **Monthly pick of commodities analysis** across energy, metals, grains and softs



Global Strategy

Global Strategy is a monthly round up of our key strategic views for global markets. This unique monthly report provides strategic direction for investors by delivering BMI's view of the macroeconomic and political risks that could potentially affect the financial markets the most.

BMI's Country Risk and Financial Markets team hold an unrivalled and impressive track record in predicting market risk and investment hotspots. Global Strategy Monthly brings together all of our core strategic views in one place, delivering an essential and actionable monthly read:

Coverage includes:

- **Monthly summary of BMI's key views**, including the key risks to watch
- **Global Asset Class Strategy** – for FX, Fixed Income, Equities and Commodities
- **Global Commodity Strategy**, including a round up of BMI's key views and forecasts
- **Global Analysis** of the impact of key issues
- **Global Data and Forecasts** for more than 80 countries – Global Economic Assumptions, Exchange Rate Forecasts, Policy Interest Rate & CPI Forecasts

Political Risk Strategy

Political Risk Strategy is a monthly publication which takes an in-depth look at political risk and how it affects economies and markets.

This essential report provides students with analysis and commentary around all major upcoming political events and their short and long term impact. Regular contents include:

Coverage includes:

- **Global Currents:** How are major political themes affecting the global economy and regional economies?
- **EM Reform Tracker:** How are economic reforms progressing in the most important emerging markets?
- **Global Industry:** How is political risk affecting key economic sectors on a national or regional level?
- **Country Focus / Flash Point:** Which country or region merits rising attention at this time?
- **Index Signals:** What are BMI's Political Risk Indices telling us about stability around the world?
- **Risk Watch:** What are the most pertinent political risks (in terms of immediacy, likelihood, and international impact) over the coming 12 months?
- **Political Calendar:** A calendar of virtually all forthcoming elections, as well as major summits and other key events
- **Opinion Polls:** A round-up of European opinion polls

**BMI**

a FitchSolutions Company

Special Reports

BMI publishes in-depth special reports on key political and economic events as they happen as well as market trends to watch.

Digital Transformation: Industries Connected

With technology being increasingly adopted in every industry, our long-term view is that every company will become a technology company. The rapid application of 5G and generative AI have accelerated the journey of digital transformation, and as such this report provides a timely review of the ways in which technology is being adopted worldwide.

Worldwide Pharmaceutical Market Forecasts

A must-have source of thousands of facts, figures and forecasts on the global pharmaceutical markets. The report provides US dollar / euro values and listings for the pharmaceutical and healthcare markets in 75 countries. This data is also presented as a global overview, and as five regional subsections.

Global Power Grids: Investment Trends Amid The Energy Transition

Regional disparities in transmission and distribution losses will persist over the duration of our forecast period to 2034, with losses in LATAM, MENA and SSA remaining well above the global average. We expect investment in grid infrastructure to remain high over the next decade, driven by the need to expand the grid and incorporate new non-hydropower renewable deployments.

Global Power Storage: Amping Up Renewables Growth

The global power storage market is poised for robust expansion over the next decade, driven by increasing renewable energy integration. Australia and the US remain investment hotspots, while Chile emerges as a market to watch. We also note a surge in global power storage project pipeline, with NAWA and Asia-Pacific leading in BESS projects.

Digital Disruption: The Impact of AI on Global Labour Markets

The introduction of low-cost generative Artificial Intelligence (AI) presents the largest technological shock to the world economy in many decades. This report builds on work by the IMF and others to provide a framework for the impact and a sense of how the rollout of AI will affect workers in different sectors and regions of the world.

LNG: Global Industry Trends

What are the key themes for the global LNG sector in 2025? We take a look at gains in Asian spot LNG prices, strengthening import growth into Europe, deepening trade ties between the US and Asia, new liquefaction project FIDs, led by the US, and a growing focus on methane emissions in the industry.

Point-of-Care Diagnostics Market: Physician's Office

The physician's office segment of the PoC market is increasing in size, primarily driven by the Covid-19 pandemic, which fuelled awareness and demand. Decentralised healthcare development is driving the continued underlying growth of PoC diagnostics. The growing appetite for further PoC testing availability has increased the development of novel technologies and expanded test menus targeted at the physician's office.

Western Critical Minerals Strategies: Building A Resilient Supply Chain

The global effort to combat and transition away from carbon-intensive energy sources, alongside increasing digitalisation, has led to an exponential rise in metals demand. Global leaders are racing to secure sufficient supply of critical minerals at risk of being undersupplied in the long term, especially as Sino-West tensions escalate amid the wave of resource nationalism sweeping across resource-rich nations.

The above represent just a few of our recently published Special Reports. For more information and a full list of titles, please contact your Account Manager.



BMI

a FitchSolutions Company

Country Risk, Political Risk and Global Strategy Analysts

Meet our team of experts:



Cedric Chehab

Managing Director, Chief Economist
Singapore



Jane Morley

Head of Sub-Saharan Africa Country Risk
London



Anwita Basu

Head of Europe Country Risk
London



Ramona Moubarak

Head of MENA Country Risk & Global
Banking
London



Chiedza Madzima

Head of Operational Risk & South Africa
Research
Pretoria



Darren Tay

Head of Asia Country Risk
Singapore



Yoel Sano

Head of Global Political & Security Risk
London



Matt Sechovsky

Head of ESG Country Research
London



Fiona Mackie

Head of Country Risk
London



BMI

a FitchSolutions Company

Industry Research Analysts

Meet our team of experts:



Michelle Karavias
Managing Director Industry Research
London



Brice Dunlop
Associate Director, Head of Consumer
Research
London



Anna-Marie Baisden
Head of Autos and Infrastructure Research
London



Jamie Davies
Head of Pharmaceuticals, Healthcare &
Medical Devices Research
London



Andrew Kitson
Head of ICT Research
London



Joseph Gatdula
Head of Oil & Gas Research & Analysis
London



Sabrin Chowdhury
Head of Commodities Analysis
Singapore



Thomas van Lanschot
Head of Power & Low Carbon Energy
London



Ramona Moubarak
Head of Banking & Financial Services
Research
London

About BMI

In an uncertain macroeconomic environment, BMI's systematic, independent and data-driven market insights, analysis and forecasts enable you to recognize and assess risks and opportunities across 200+ markets and 20+ industries.

For over 40 years, we have provided impartial and transparent analytics, data and research across themes, countries and sectors, with deep insight into emerging markets.

Our detailed intelligence is frequent, consistent and systematic, enabling you to easily make comparisons and interrogate data to support your strategic plans and investment decisions.

THIS COMMENTARY IS PUBLISHED BY BMI, a Fitch Solutions Company and is NOT a comment on Fitch Ratings' Credit Ratings. Any comments or data included in the report are solely derived from BMI and independent sources. Fitch Ratings analysts do not share data or information with BMI.

Copyright © 2025 Fitch Solutions, Inc., Fitch Ratings, Inc., Fitch Solutions Group, Inc. and their subsidiaries. DC-18777

For any queries, Contact:

Bharat Book Bureau



808, Real Tech Park, Sector - 30A, Vashi, Navi Mumbai, India – 400703

Website: www.bharatbook.com

Email: info@bharatbook.com

Phone: +91 22 68327185

Mobile: +91 9223767111